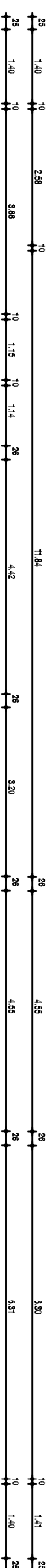
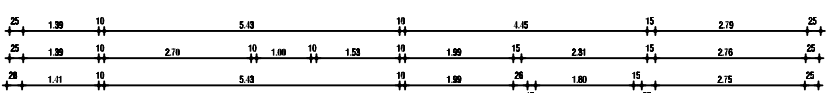
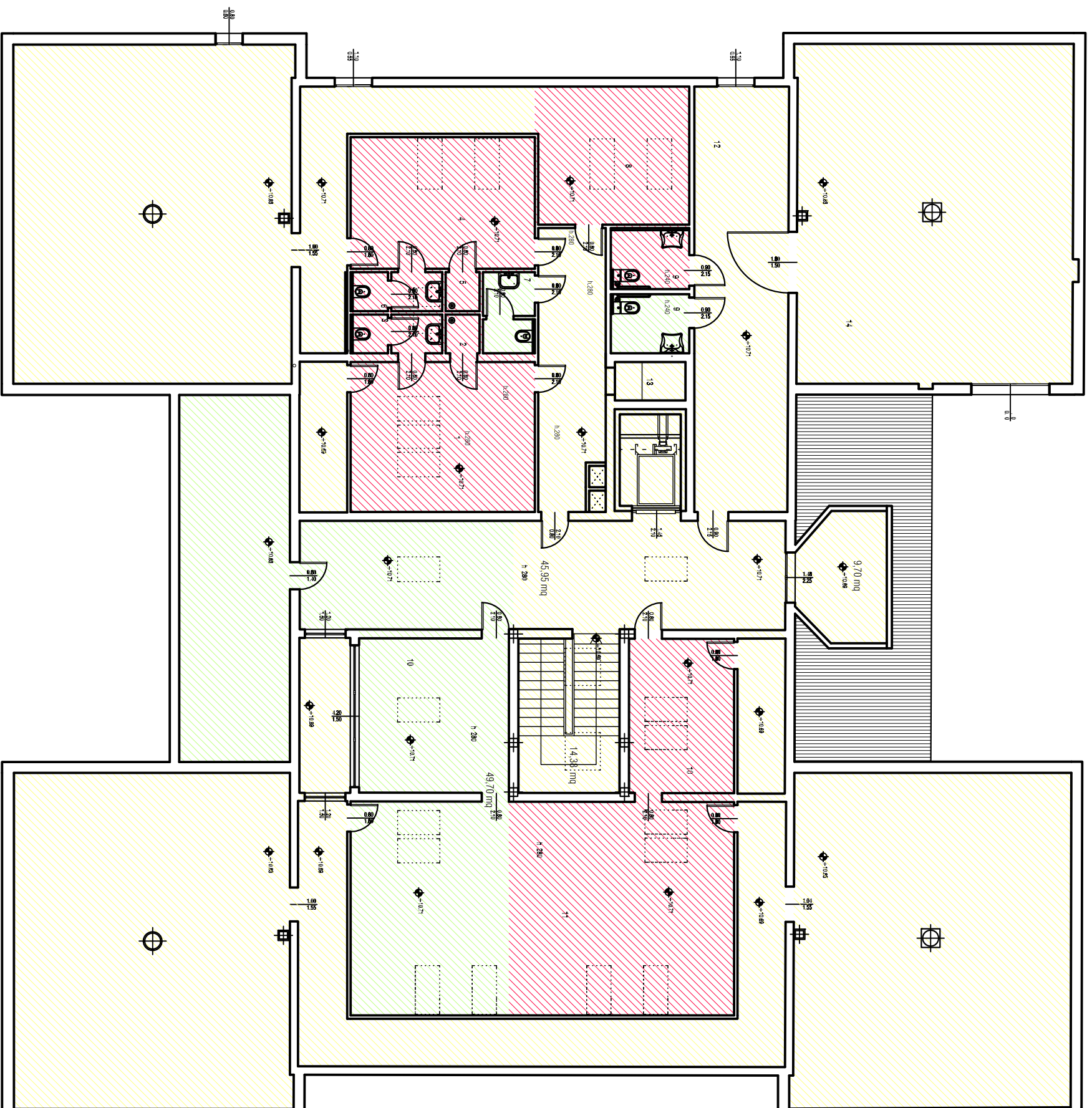
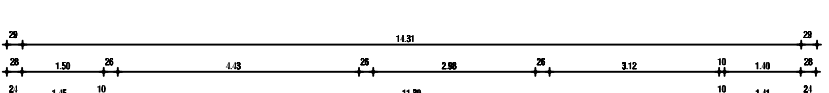
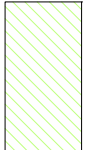
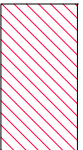



**PIANO SOTTOTETTO
FUNZIONI**

- 1 SPOGLIATOIO 1
- 2 DOCCIA 1
- 3 BAGNO 1
- 4 SPOGLIATOIO 2
- 5 DOCCIA2
- 6 BAGNO 2
- 7 BAGNO OPERATORI
- 8 DEPOSITO
- 9 BAGNO OSPITI
- 10 SALETTA
- 11 PLURIUSO PER ATTIVITA' SENZA FERMI
- 12 VIA DI FUGA
- 13 VANO TECNICO
- 14 VANO MACCHINE



PIANO SOTTOTETTO

-  ASP SENECA 114 mq
-  COMUNE CORTE/
FARFALE (CADIAI) 135,80 mq
-  COMUNE A TUTTI 506,70 mq