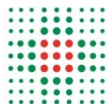


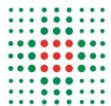
# **Regolamento di Organizzazione Aziendale Parte II ORGANIGRAMMI**

**Aggiornato al 03/11/2025**

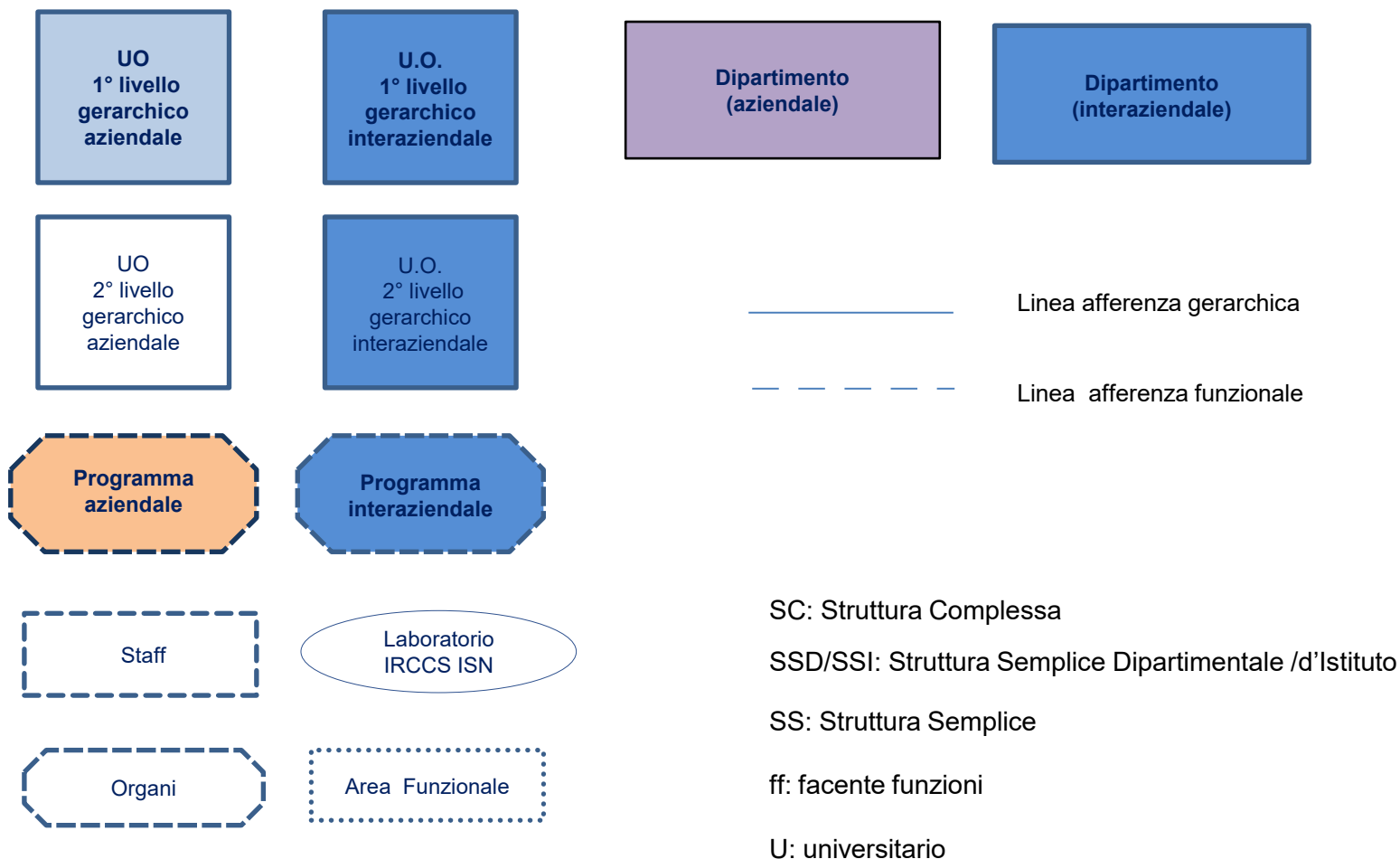


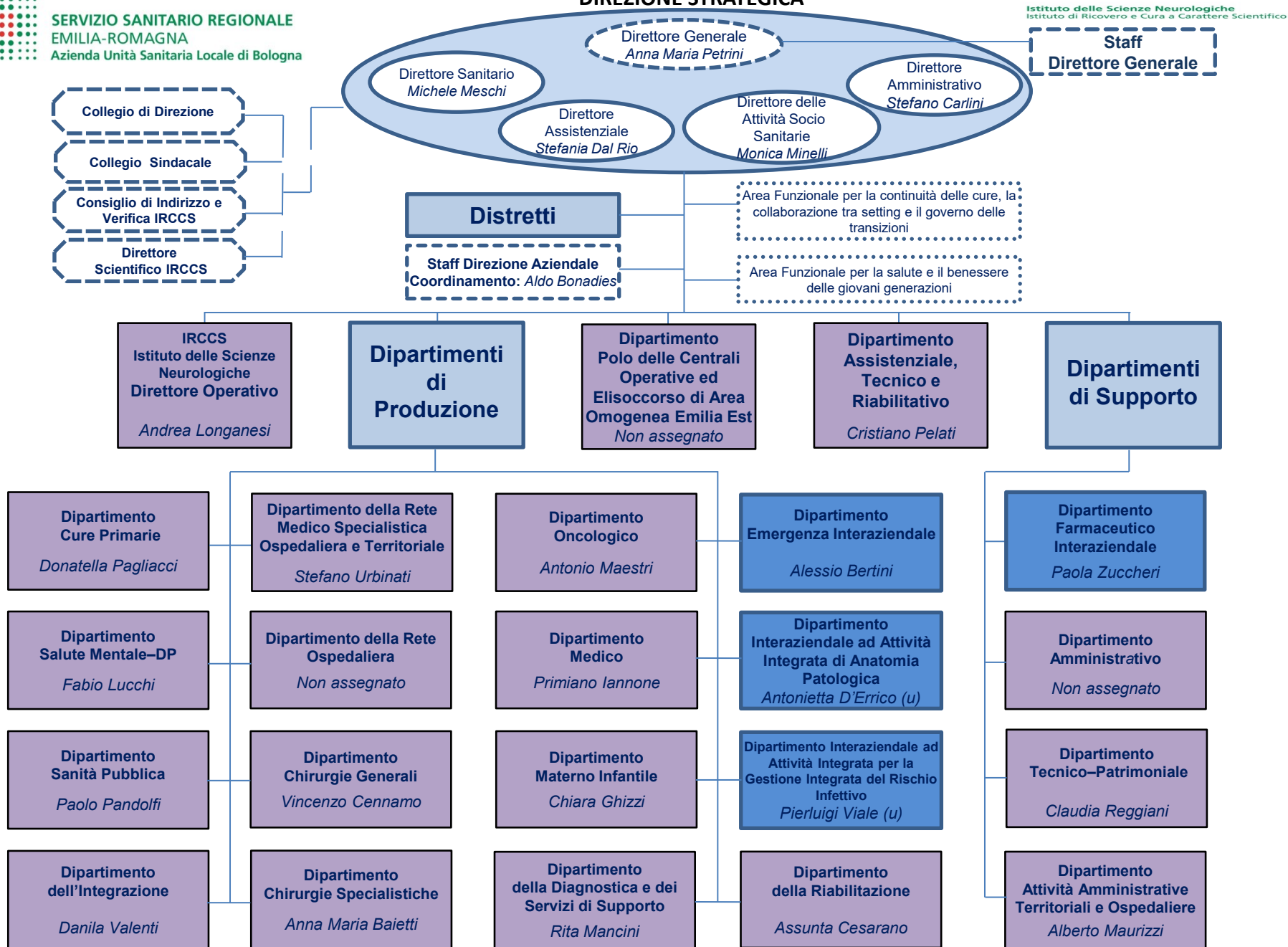
# INDICE

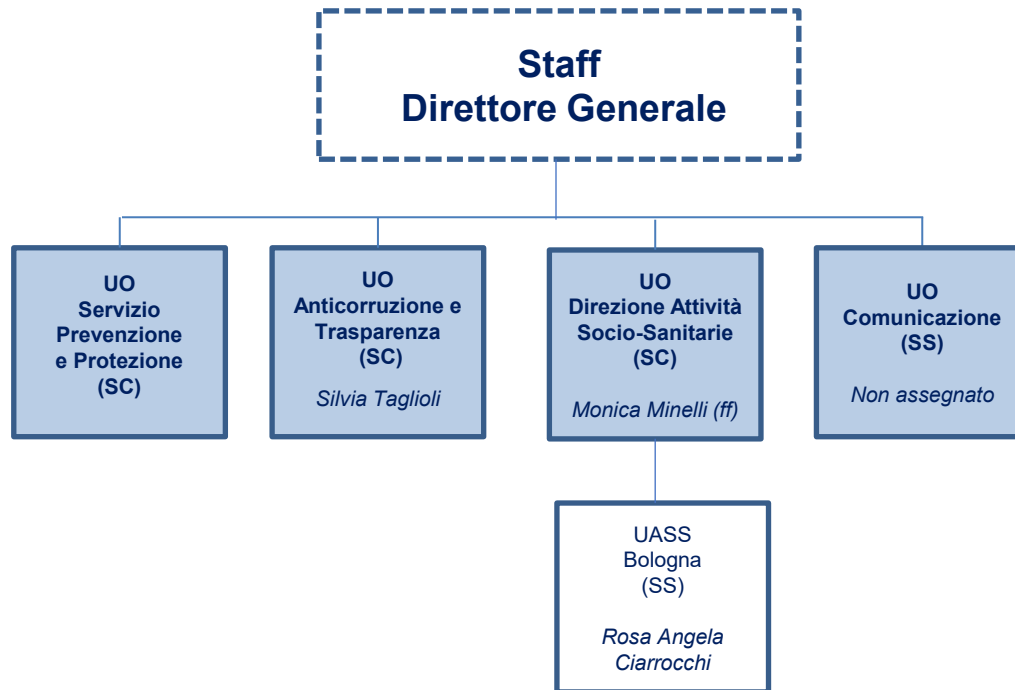
<b>LEGENDA</b>	pag. 3
<b>ASSETTO ORGANIZZATIVO COMPLESSIVO</b>	pag. 4
<b>STAFF DIRETTORE GENERALE</b>	pag. 5
<b>STAFF DIREZIONE AZIENDALE</b>	pag. 6
<b>I DISTRETTI</b>	pag. 7
<b>IRCCS - ISTITUTO DELLE SCIENZE NEUROLOGICHE</b>	pag. 8-9
<b>I DIPARTIMENTI DI PRODUZIONE</b>	
DIPARTIMENTO CURE PRIMARIE	pag. 10
DIPARTIMENTO SALUTE MENTALE – DIPENDENZE PATOLOGICHE	pag. 11-12
DIPARTIMENTO SANITÀ PUBBLICA	pag. 13-14
DIPARTIMENTO DELLA RETE MEDICO SPECIALISTICA OSPEDALIERA E TERRITORIALE	pag. 15
DIPARTIMENTO DELL'INTEGRAZIONE	pag. 16
DIPARTIMENTO DELLA RETE OSPEDALIERA	pag. 17
DIPARTIMENTO CHIRURGIE GENERALI	pag. 18
DIPARTIMENTO CHIRURGIE SPECIALISTICHE	pag. 19
DIPARTIMENTO ONCOLOGICO	pag. 20
DIPARTIMENTO MEDICO	pag. 21
DIPARTIMENTO MATERNO INFANTILE	pag. 22
DIPARTIMENTO DELLA DIAGNOSTICA E DEI SERVIZI DI SUPPORTO	pag. 23
DIPARTIMENTO DELLA RIABILITAZIONE	pag. 24
DIPARTIMENTO EMERGENZA INTERAZIENDALE - DEI	pag. 25
DIPARTIMENTO INTERAZIENDALE AD ATTIVITA' INTEGRATA DI ANATOMIA PATOLOGICA - DIAP	pag. 26
DIPARTIMENTO INTERAZIENDALE AD ATTIVITA' INTEGRATA PER LA GESTIONE INTEGRATA DEL RISCHIO INFETTIVO – DAIGIRI	pag. 27
<b>DIPARTIMENTO POLO DELLE CENTRALI OPERATIVE ED ELISOCORSO DI AREA OMOGENEA EMILIA EST</b>	pag. 28
<b>I DIPARTIMENTI DI SUPPORTO</b>	
DIPARTIMENTO AMMINISTRATIVO	pag. 29
DIPARTIMENTO TECNICO-PATRIMONIALE	pag. 30
DIPARTIMENTO ATTIVITA' AMMINISTRATIVE TERRITORIALI E OSPEDALIERE	pag. 31
DIPARTIMENTO FARMACEUTICO INTERAZIENDALE – DFI	pag. 32
<b>DATeR – DIPARTIMENTO ASSISTENZIALE, TECNICO E RIABILITATIVO</b>	pag. 33

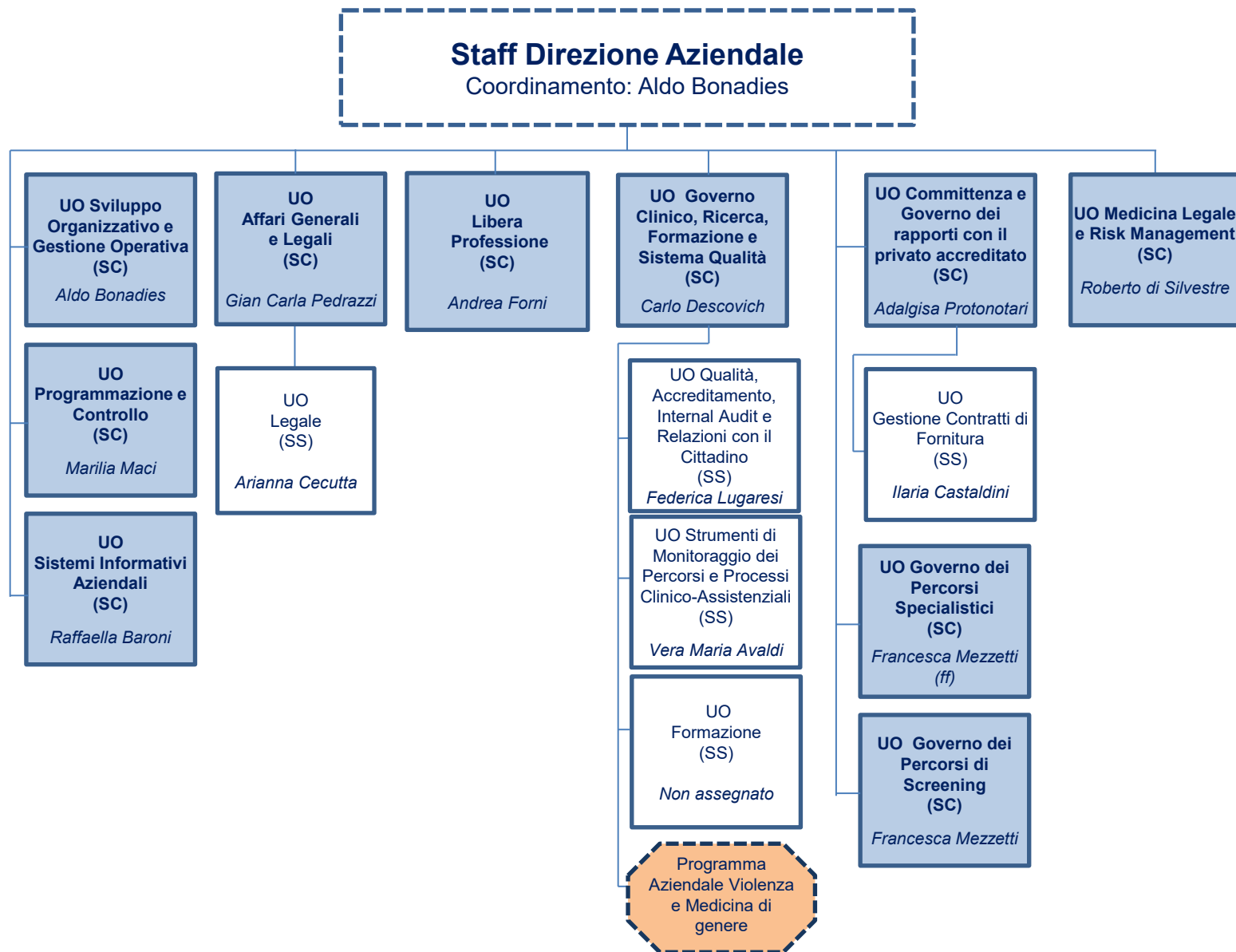
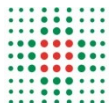


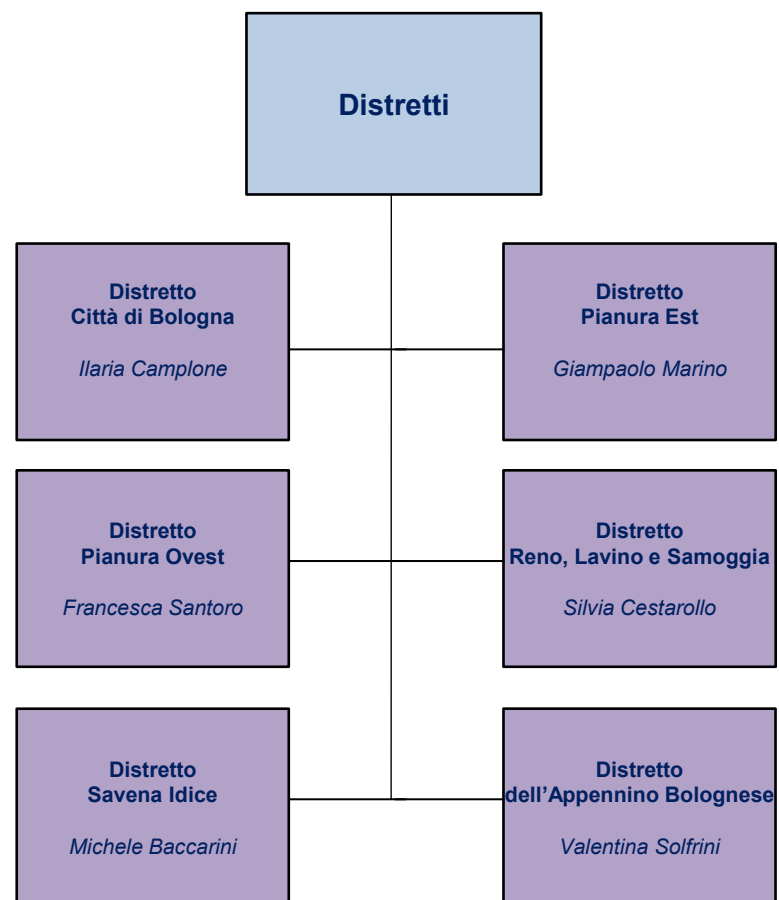
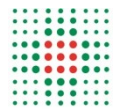
## LEGENDA ORGANIGRAMMI AZIENDA USL DI BOLOGNA





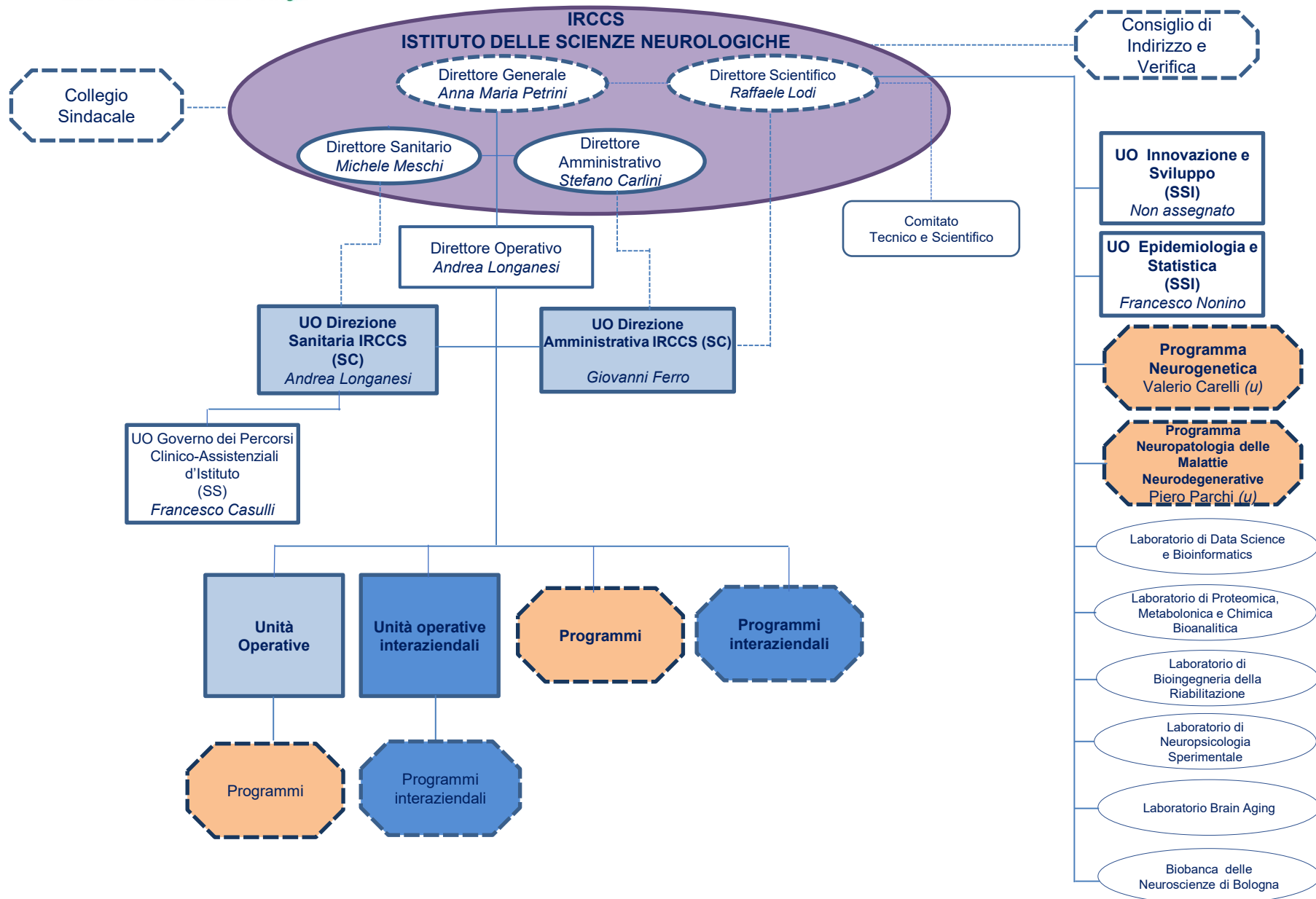


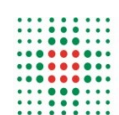






## DIREZIONE STRATEGICA





**IRCCS**  
**Istituto delle Scienze Neurologiche**  
**Direzione Generale**  
*Anna Maria Petrini*

Direttore Operativo  
*Andrea Longanesi*

**UO Clinica Neurologica – Rete Neurologica Metropolitana – NeuroMet (SC)**  
*Federica Provini (u)*

**UO Clinica Neurologica (SC)**  
*Rocco Liguori (u)*

**UO Neurologia OB (SC)**  
*Francesca Pastorelli (ff)*

**UO Medicina Riabilitativa Infantile (SC)**  
*Antonella Cersosimo*

**UO Neurochirurgia (SC)**  
*Carmelo Sturiale*

**UO Neuroradiologia (SC)**  
*Massimo Dall'Olio (ff)*

**UO Neurologia OM e Rete Stroke Metropolitana (SC)**  
*Andrea Zini*

**UO Neurologia AO (SS)**  
*Maria Guarino*

**Programma Patologia Neuromuscolare dell'adulto e Neuroimmunologia**  
*Vincenzo Angelo Donadio*

**UO Oncologia del Sistema Nervoso (SC)**  
*Enrico Franceschi*

**UO Neuroriabilitazione (SC)**  
*Francesco Lombardi*

**Programma Neurochirurgia Vascolare e d'Urgenza e Neurotraumatologia**  
*Carlo Bortolotti*

**Programma Neuroimmagini Funzionali e Molecolari**  
*Caterina Tonon (u)*

**UO Neuroradiologia OM (SSI)**  
*Luigi Simonetti*

**Programma Cefalee ed Algie Facciali**  
*Sabina Cevoli*

**UO Disturbi dello Spettro Autistico (SSI)**  
*Paola Visconti*

**UO Riabilitazione Sclerosi Multipla (SSI)**  
*Alessandra Lugaesi (u)*

**UO Medicina Riabilitativa OB (SS)**  
*Non assegnato*

**UO Anestesia e Rianimazione OB (SC)**  
*Carlo Alberto Castioni*

**Programma Neuroradiologia con tecniche ad elevata complessità**  
*Monica Maffei (ff)*

**UO Neuropsichiatria dell'Età Pediatrica (SC)**  
*Duccio Maria Cordelli (u)*

**Programma Epilessia**  
*Francesca Bisulli (u)*

**Programma Centro Clinico NeMO Bologna**  
*Rocco Liguori (ff)(u)*

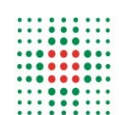
**Programma Neurochirurgia Pediatrica**  
*Mino Zucchelli*

**UO Malattie Neuromuscolari dell'Età Evolutiva (SS)**  
*Antonella Pini*

**Programma Disturbi del Comportamento Alimentare**  
*Antonia Parmeggiani (u)*

**Programma Neurochirurgia Ipofisi**  
*Diego Mazzatenta (u)*

**Programma Neurochirurgia Vertebrale**  
*Elena Serchi*



**Dipartimento  
Cure Primarie**  
*Donatella Pagliacci*

**UO  
Cure Primarie  
Pianura  
(SC)**

*Non assegnato*

**UO  
Cure Primarie  
Appennino, Reno-  
Lavino-Samoggia  
(SC)**

*Stefania Moscardelli  
(ff)*

**UO  
Cure Primarie  
Bologna  
(SC)**

*Donatella  
Pagliacci*

**UO  
Cure Primarie  
Savona Idice  
(SS)**

*Non assegnato*

**UO  
Consultori  
Familiari  
(SC)**

*Maria Sichilenda  
Nobile De Santis*

**UO  
Consultori  
Familiari Est  
(SS)**

*Valentina Ciardelli*

**UO  
Consultori  
Familiari Ovest  
(SS)**

*Eleonora  
Guadalupi*

**UO  
Pediatria  
Territoriale  
(SC)**

*Rita Ricci*

**UO  
Pediatria  
Territoriale Est  
(SS)**

*Chiara Landini*

**UO  
Pediatria  
Territoriale Ovest  
(SS)**

*Antonietta Rita  
Papasodero*

**UO  
Salute nelle  
Strutture  
Penitenziarie  
(SSD)**

*Ruggero Giuliani*

**UO Governo dei  
Percorsi di  
Innovazione  
Organizzativa e  
di Processo in  
Cure Primarie  
(SC)**

*Non assegnato*

**Programma Sviluppo  
delle Case della  
Comunità**  
*Non assegnato*

**Programma Gestione del  
processo di transizione delle  
cure e sviluppo della rete degli  
Ospedali di Comunità**  
*Lucia Angeloni*

**Programma supporto organizzativo  
nell'implementazione e operatività del  
Numero Unico Armonizzato Europeo  
116117 ed allo sviluppo delle cure  
domiciliari**  
*Sergio Cinocca*

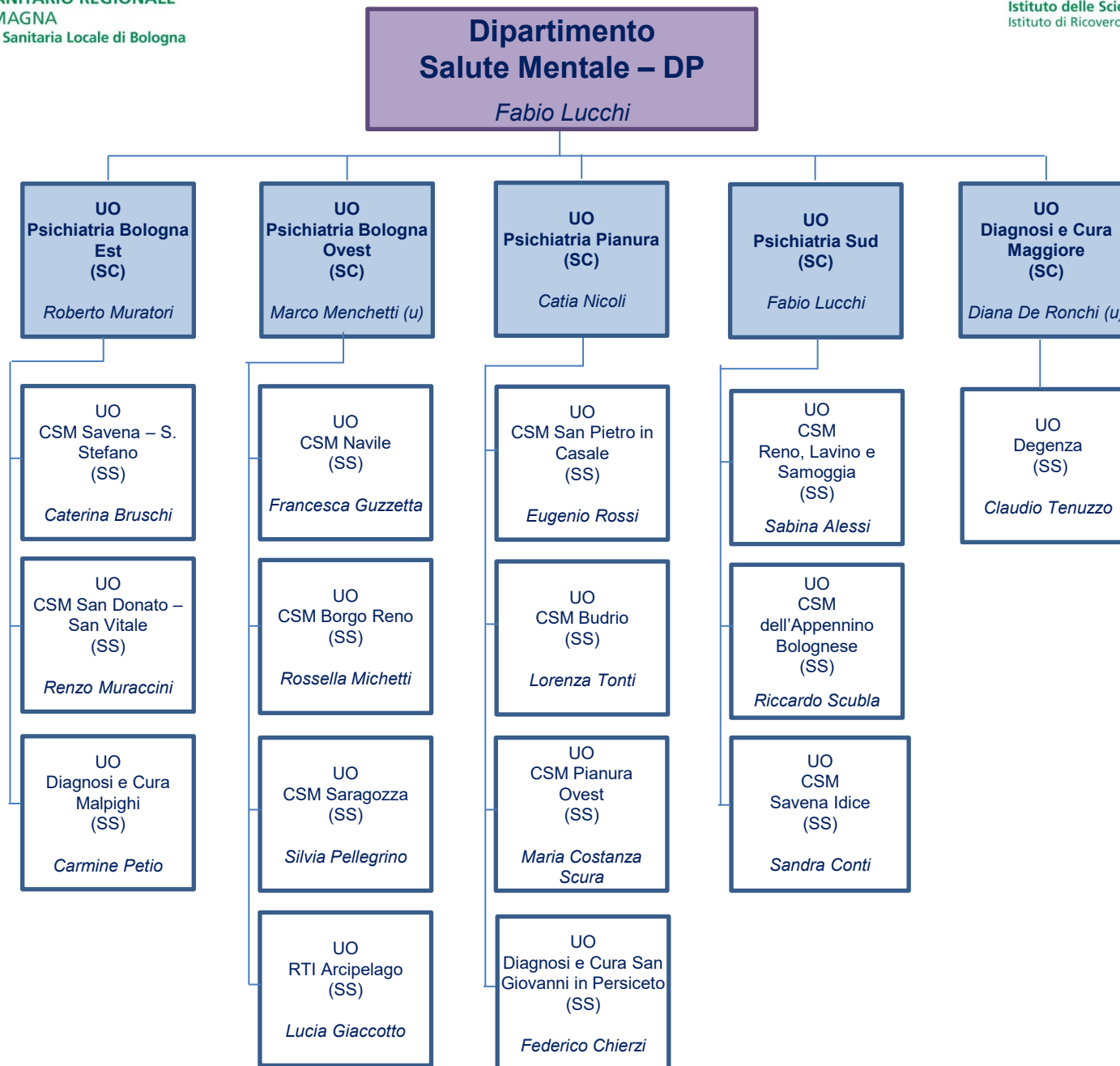
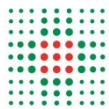
**Programma Implementazione delle  
soluzioni di Telemedicina e sviluppo  
tecnologico nelle cure primarie**  
*Non assegnato*

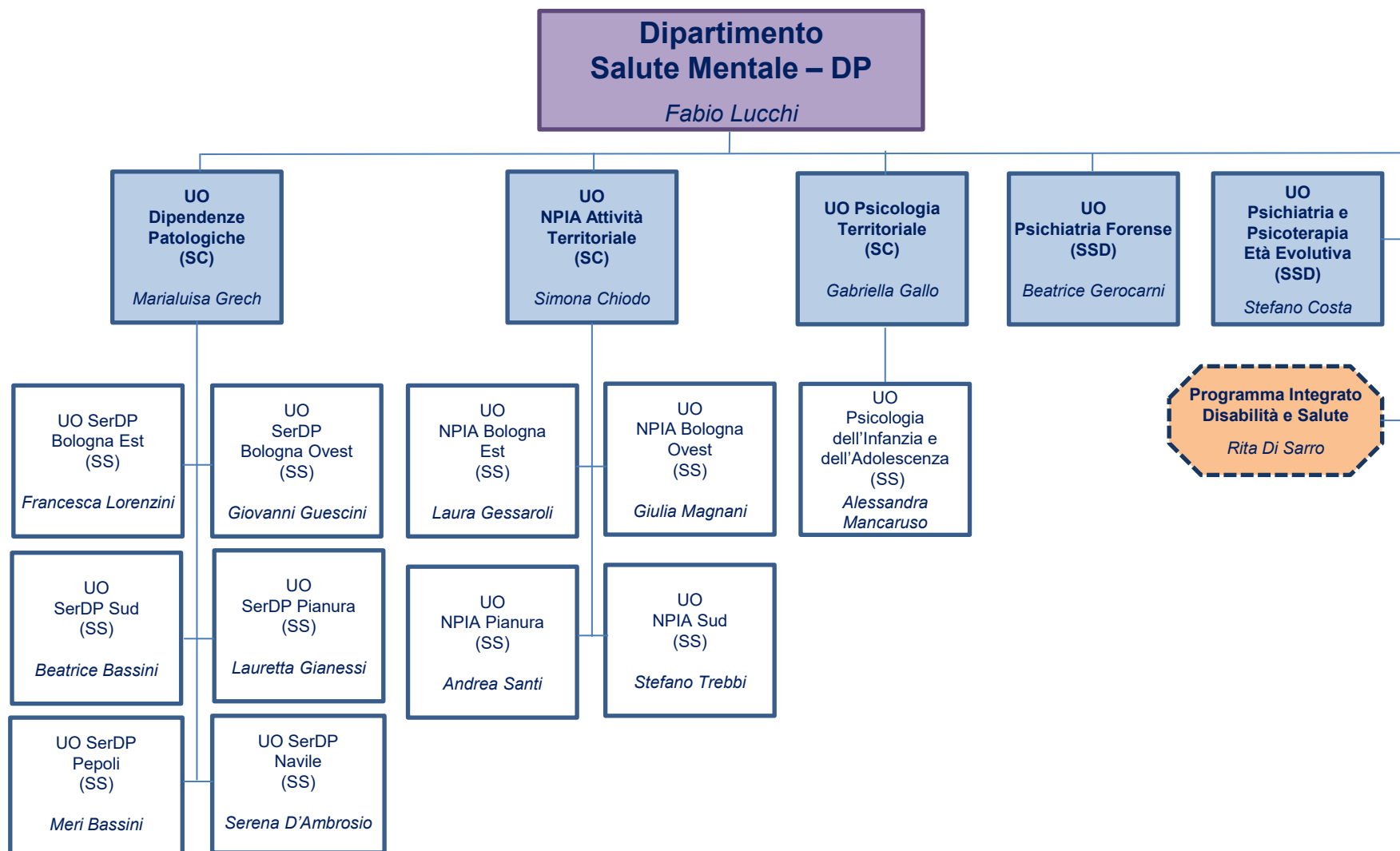
**Programma  
Sviluppo dei percorsi e  
servizi di gestione delle  
urgenze minori a bassa  
complessità nelle cure  
primarie**

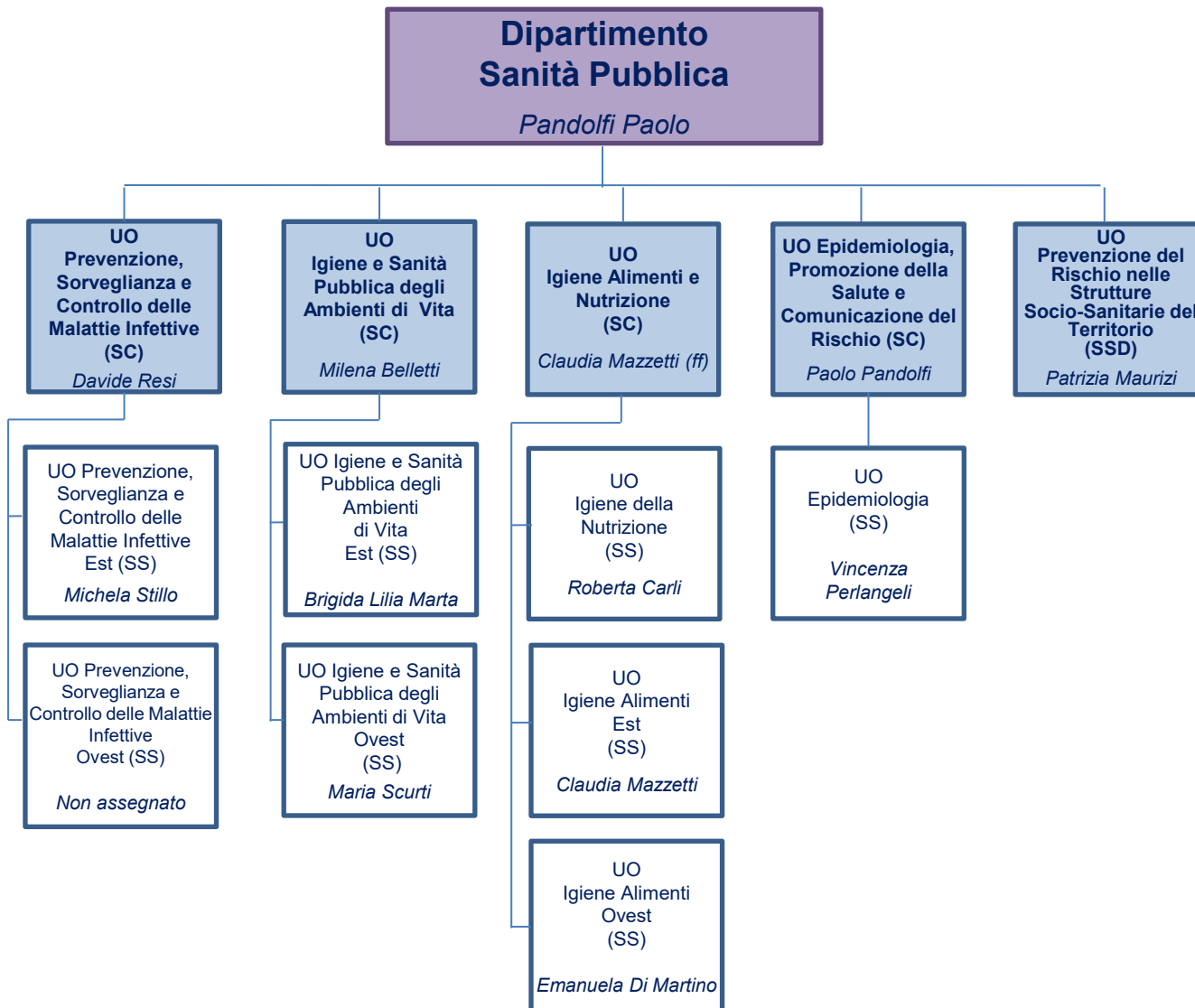
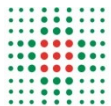
*Eleonora Cravero*

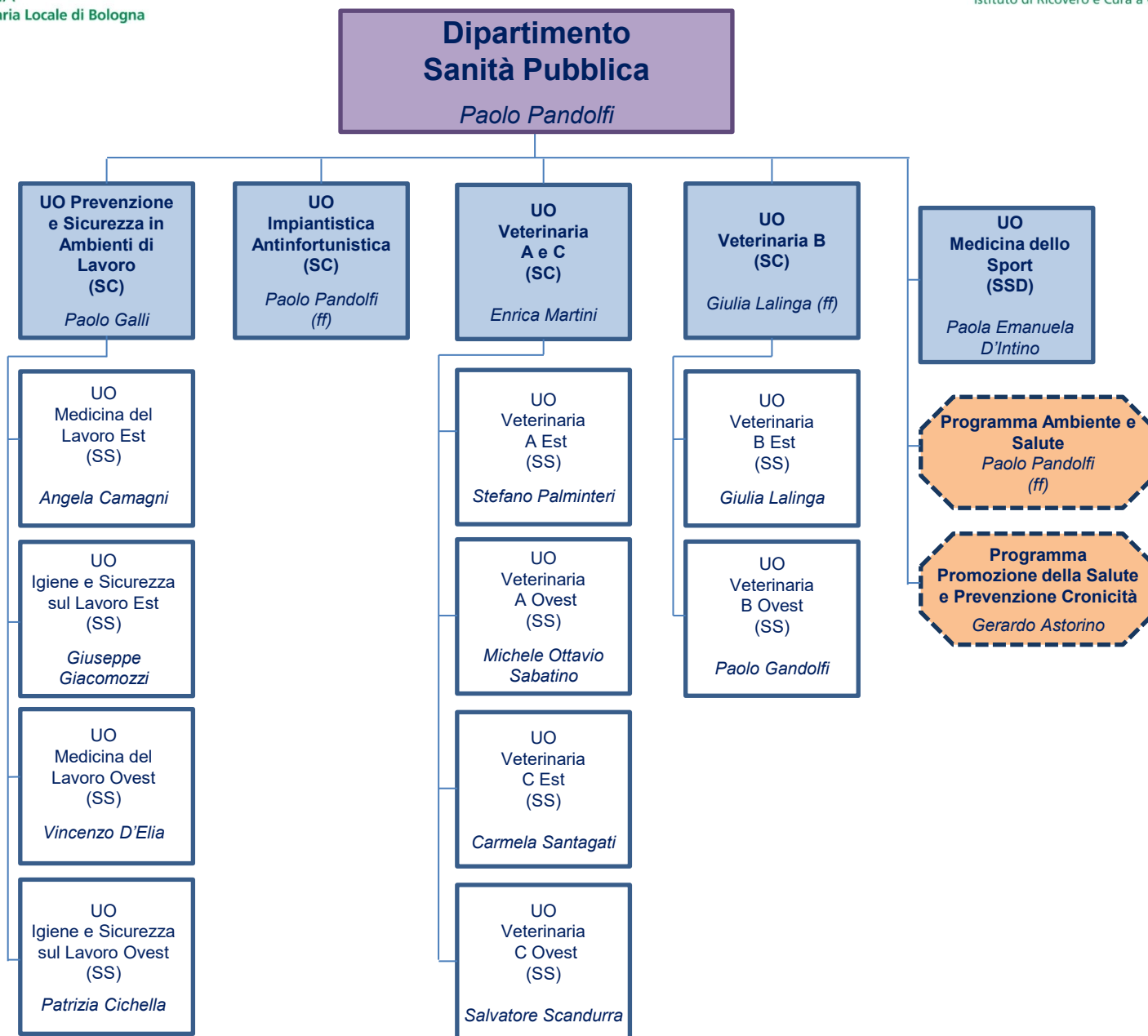
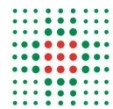
**Programma Governo  
del processo di  
assistenza protesica**

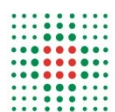
*Evis Dodi*





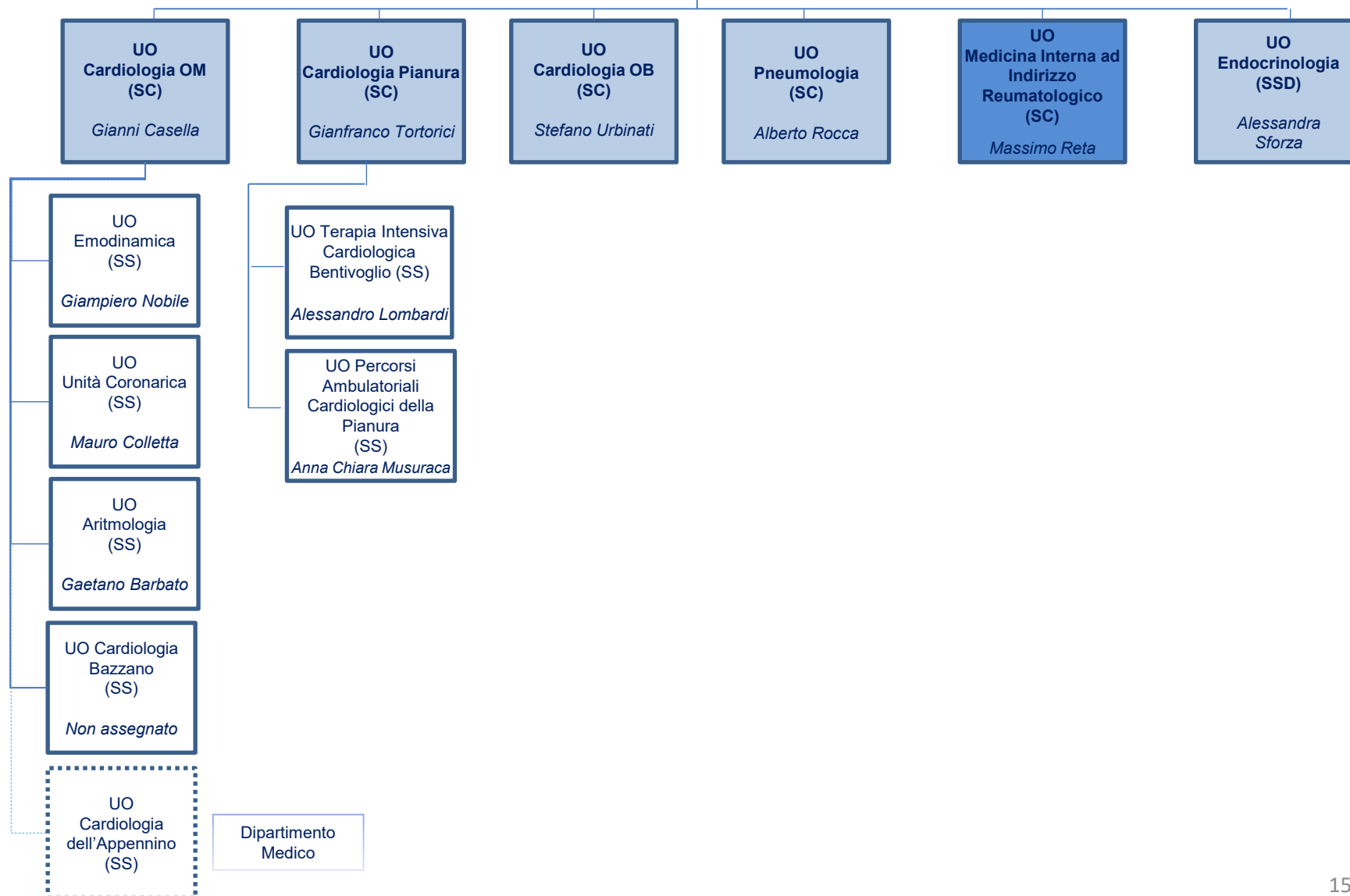


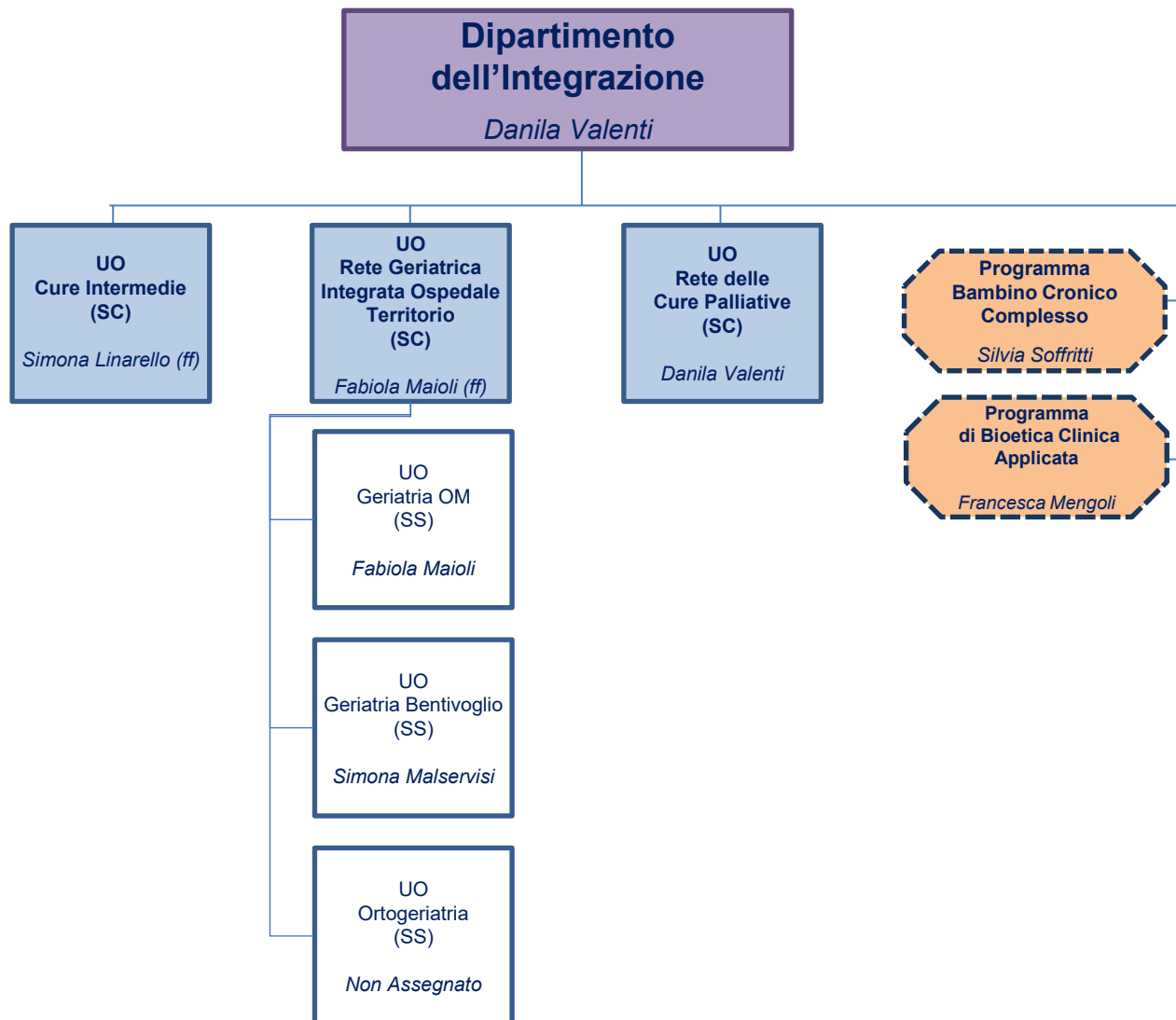
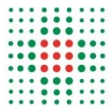


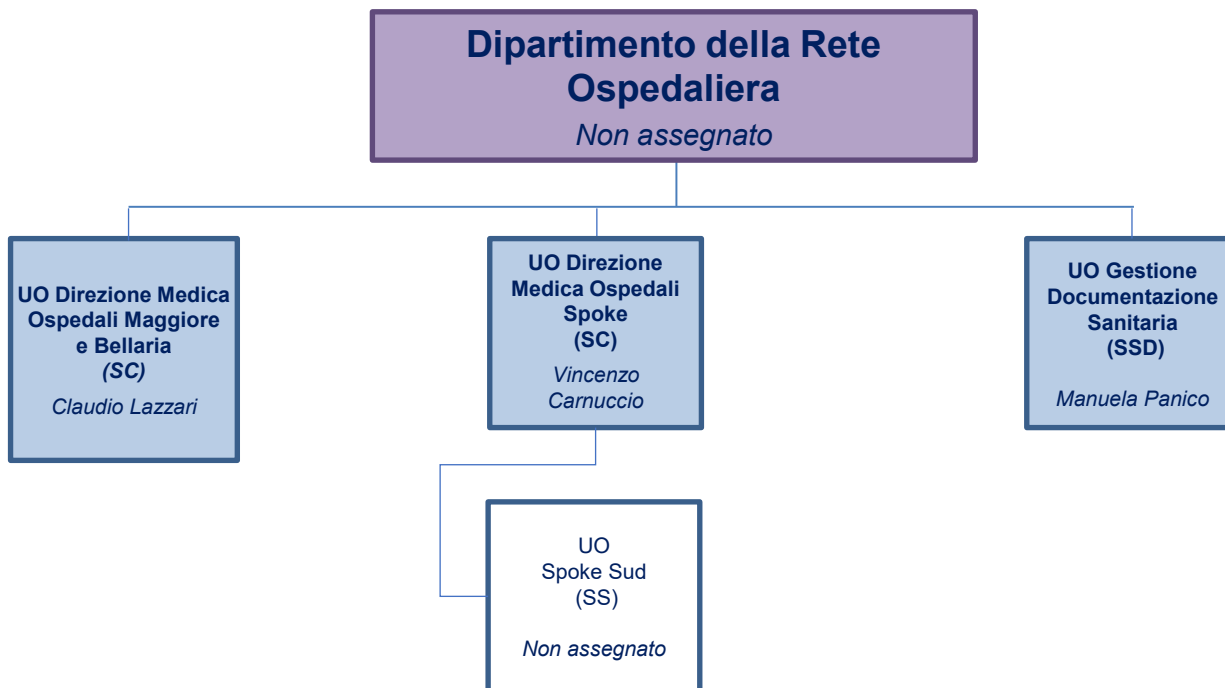
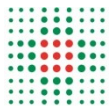


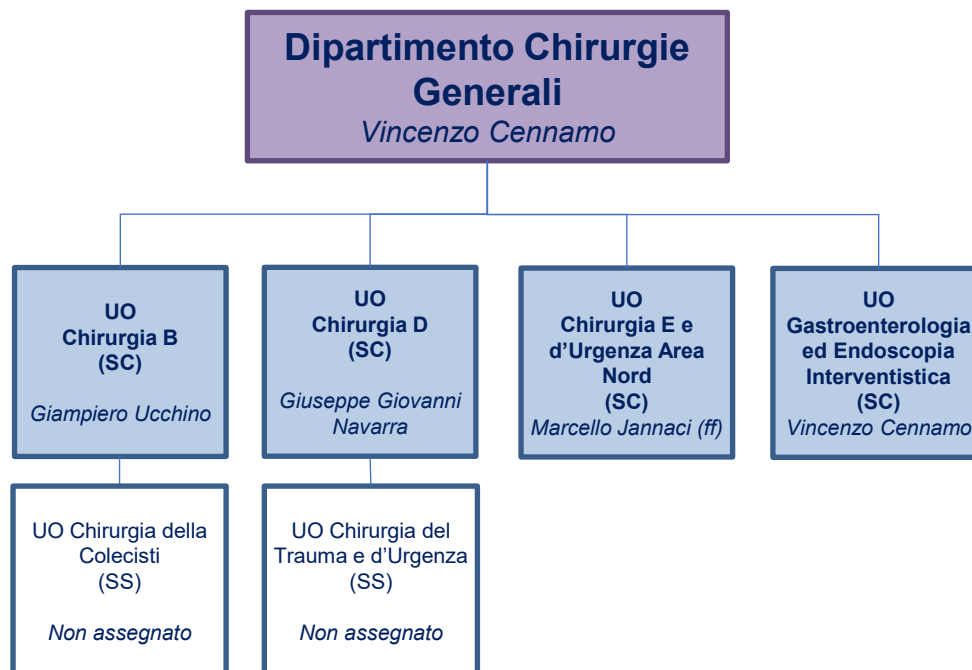
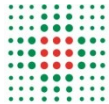
## Dipartimento della Rete Medico Specialistica Ospedaliera e Territoriale

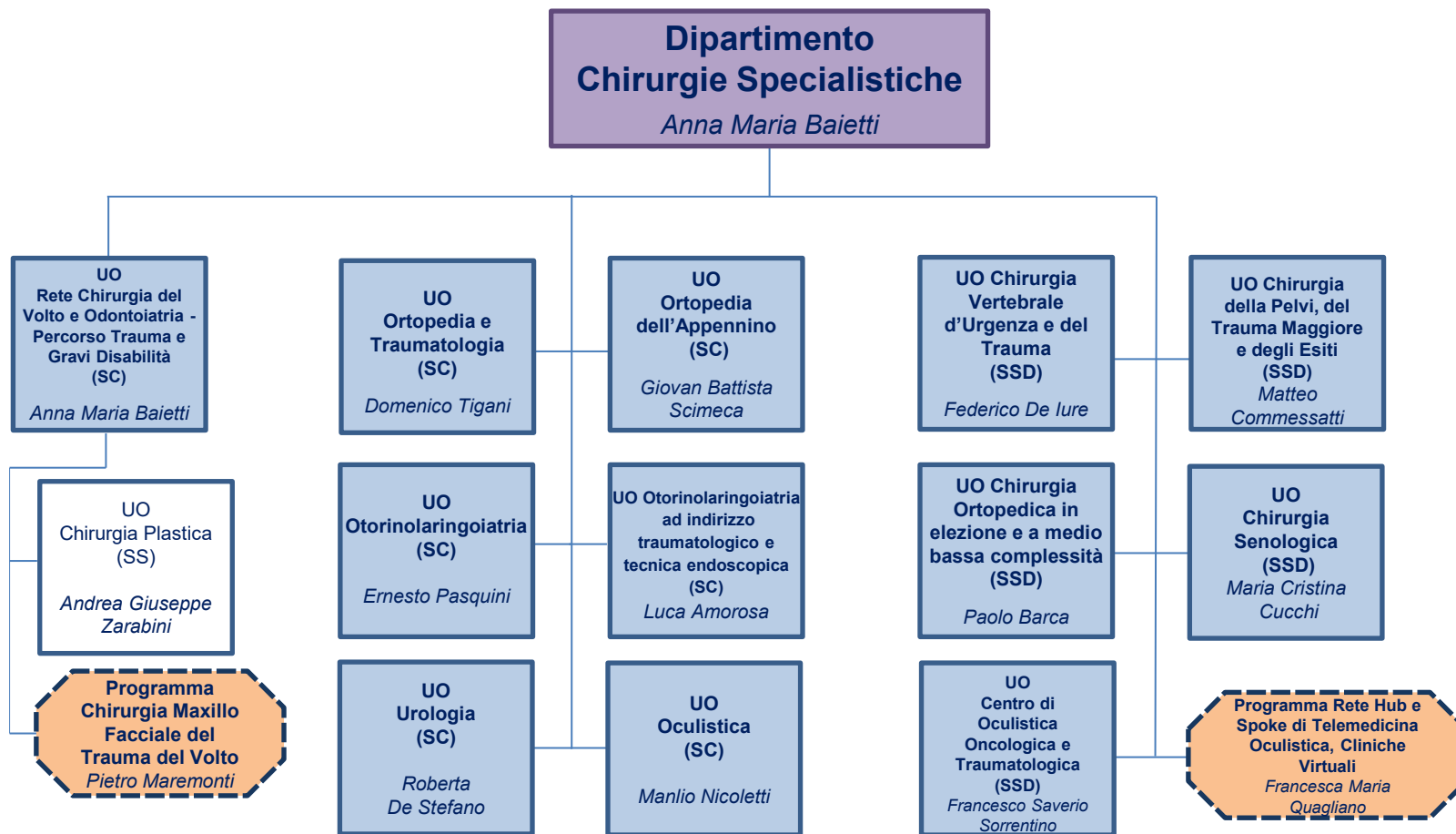
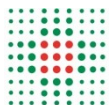
Stefano Urbinati

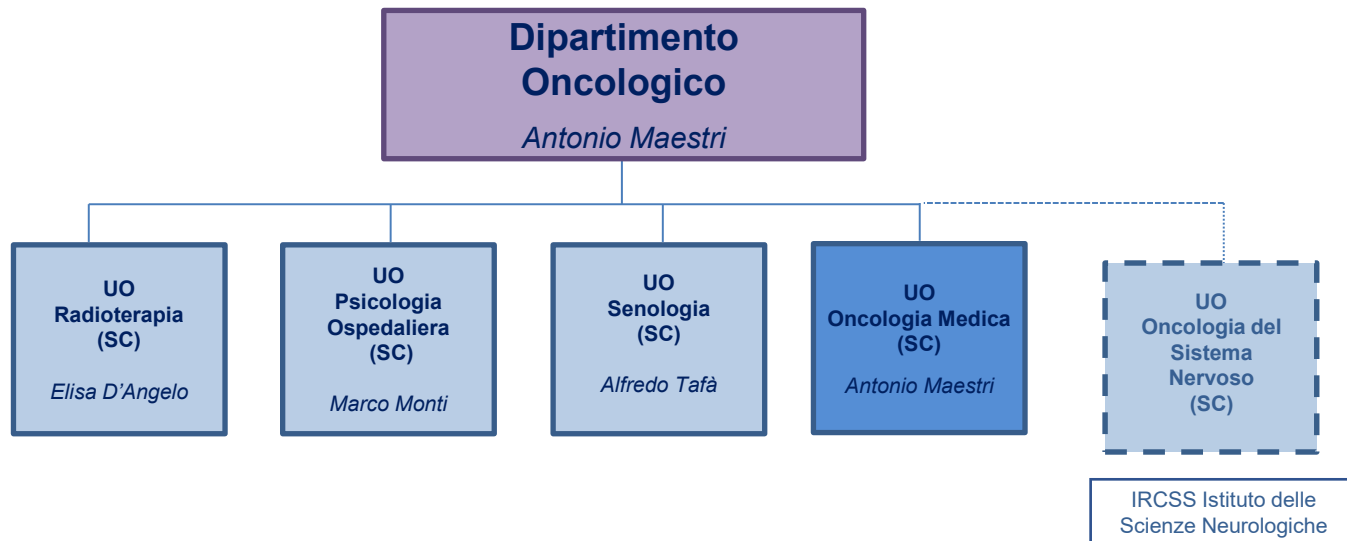


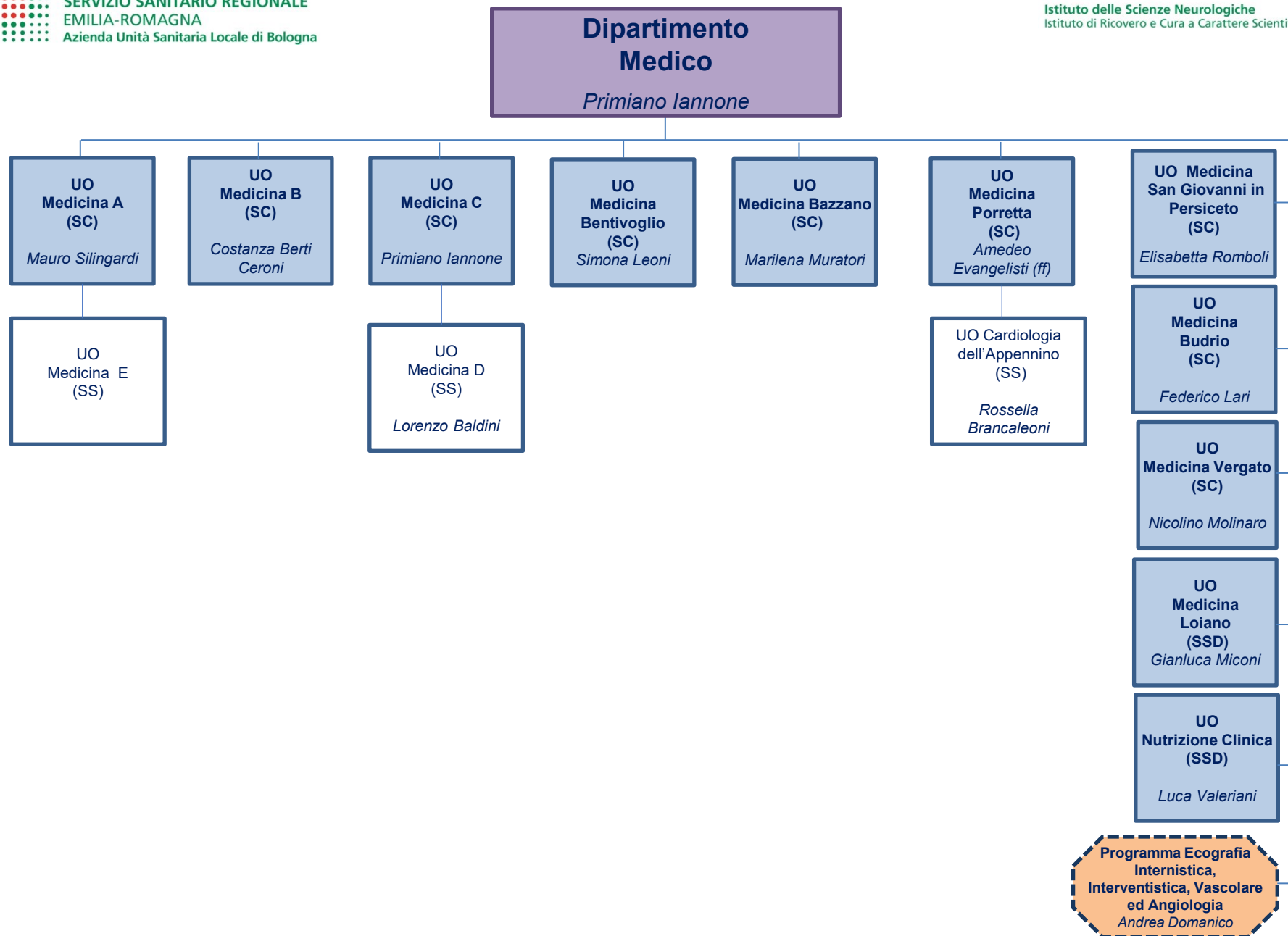
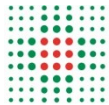


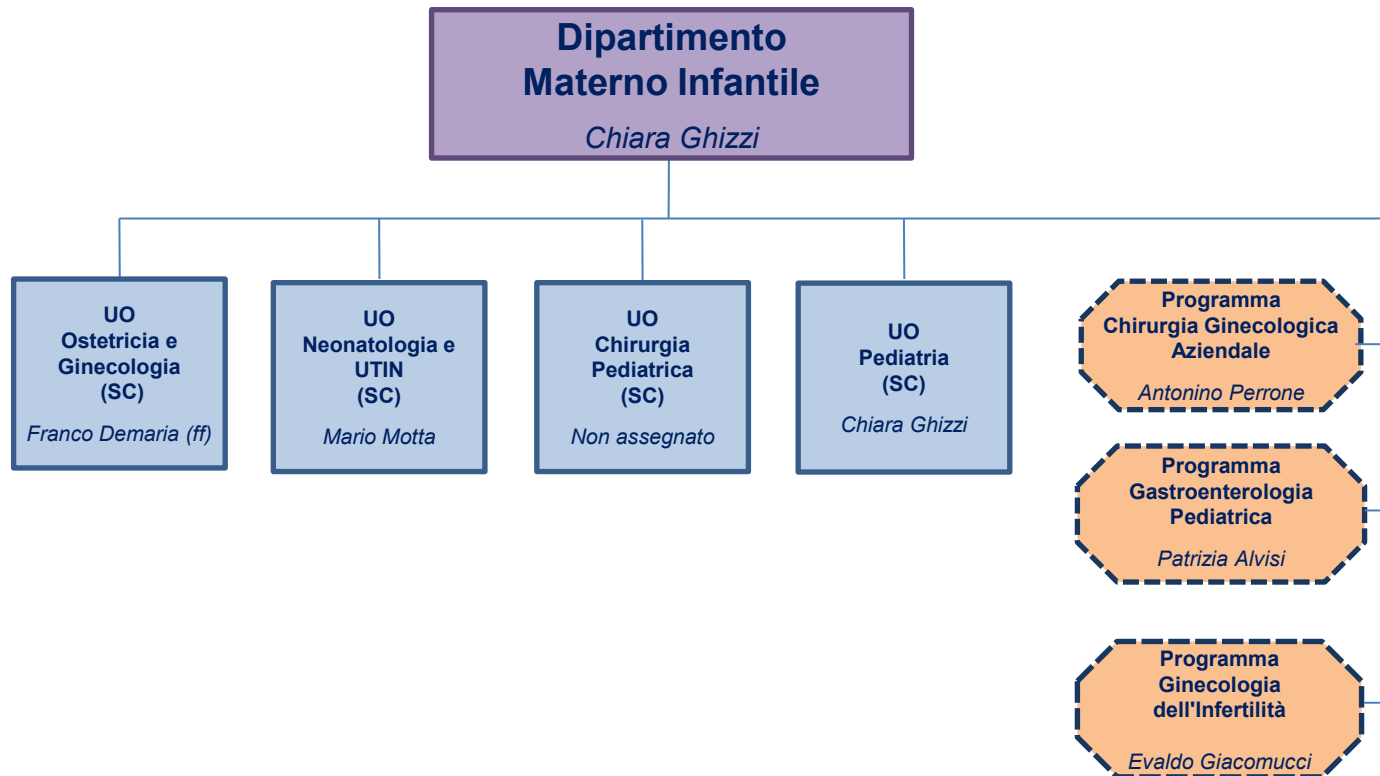
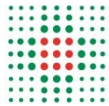


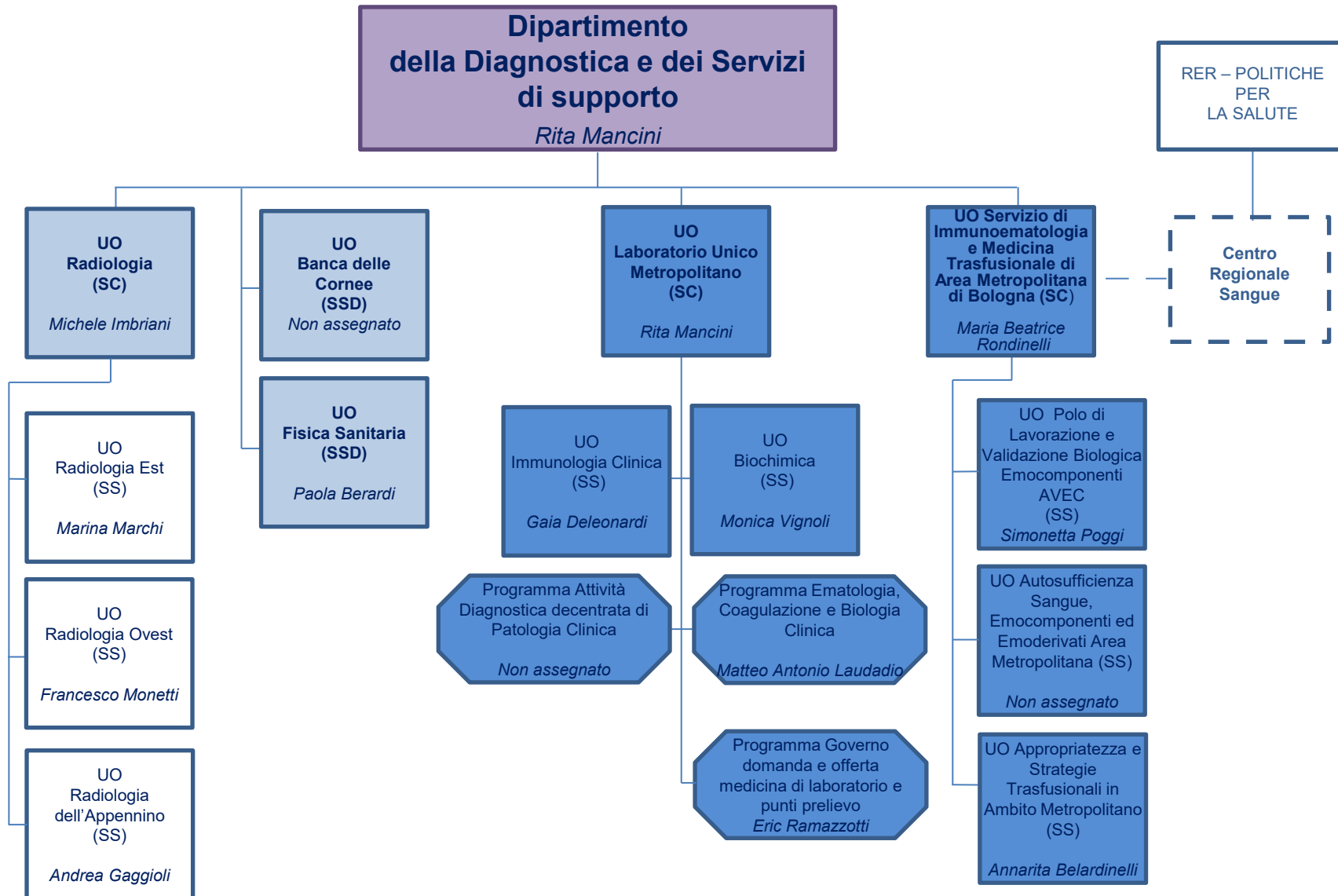
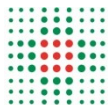


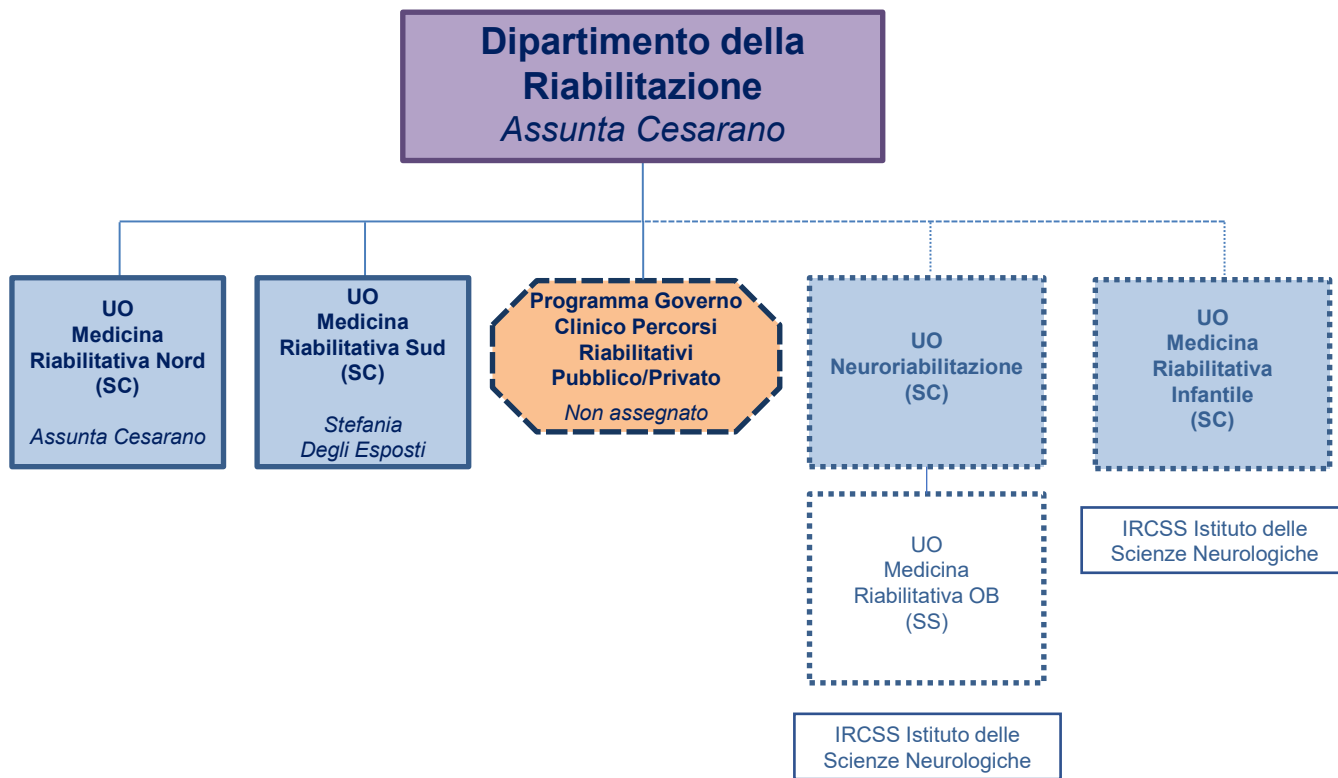
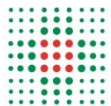


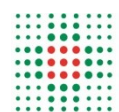






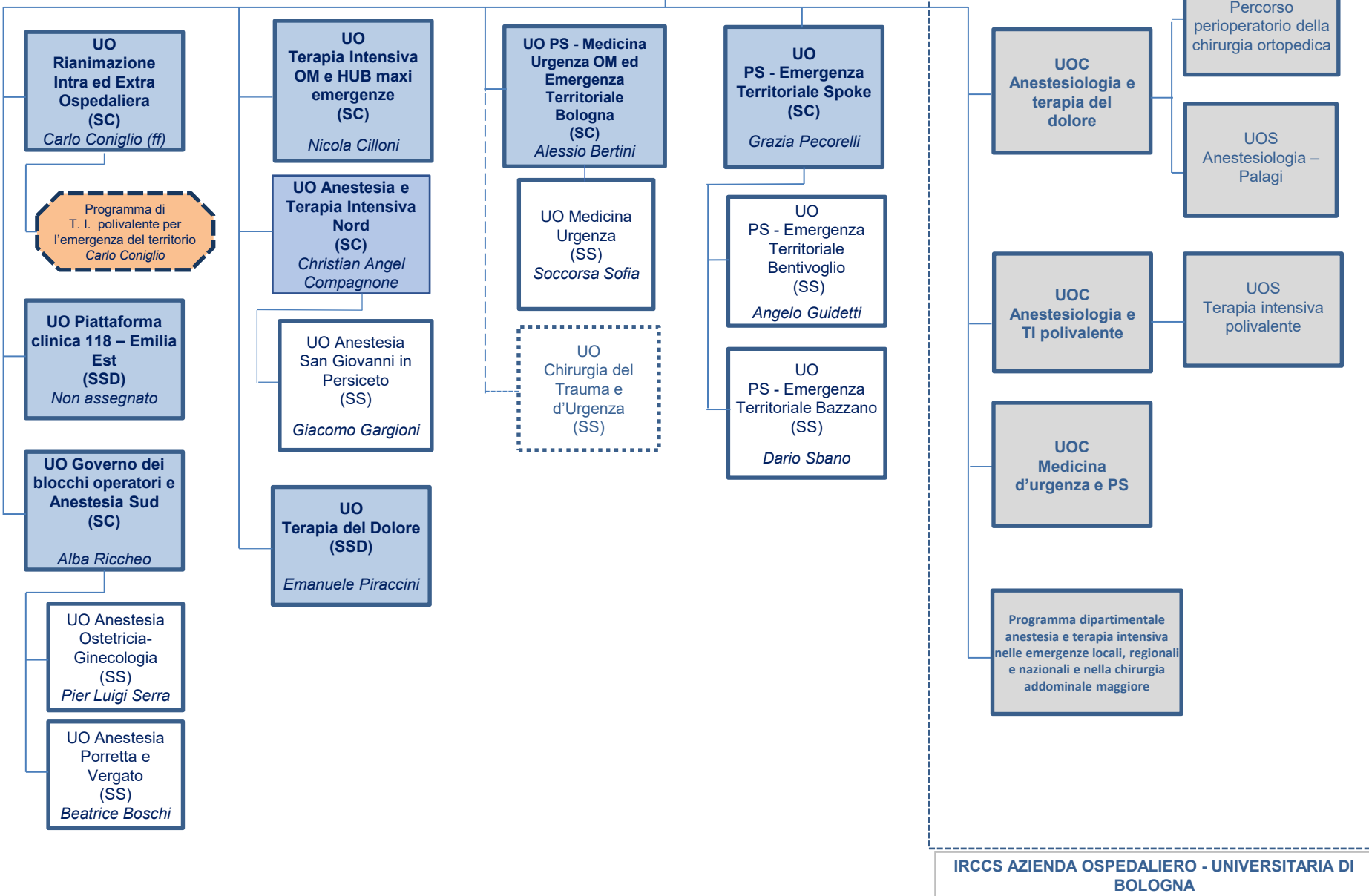


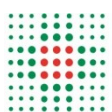




## Dipartimento Emergenza Interaziendale – DEI

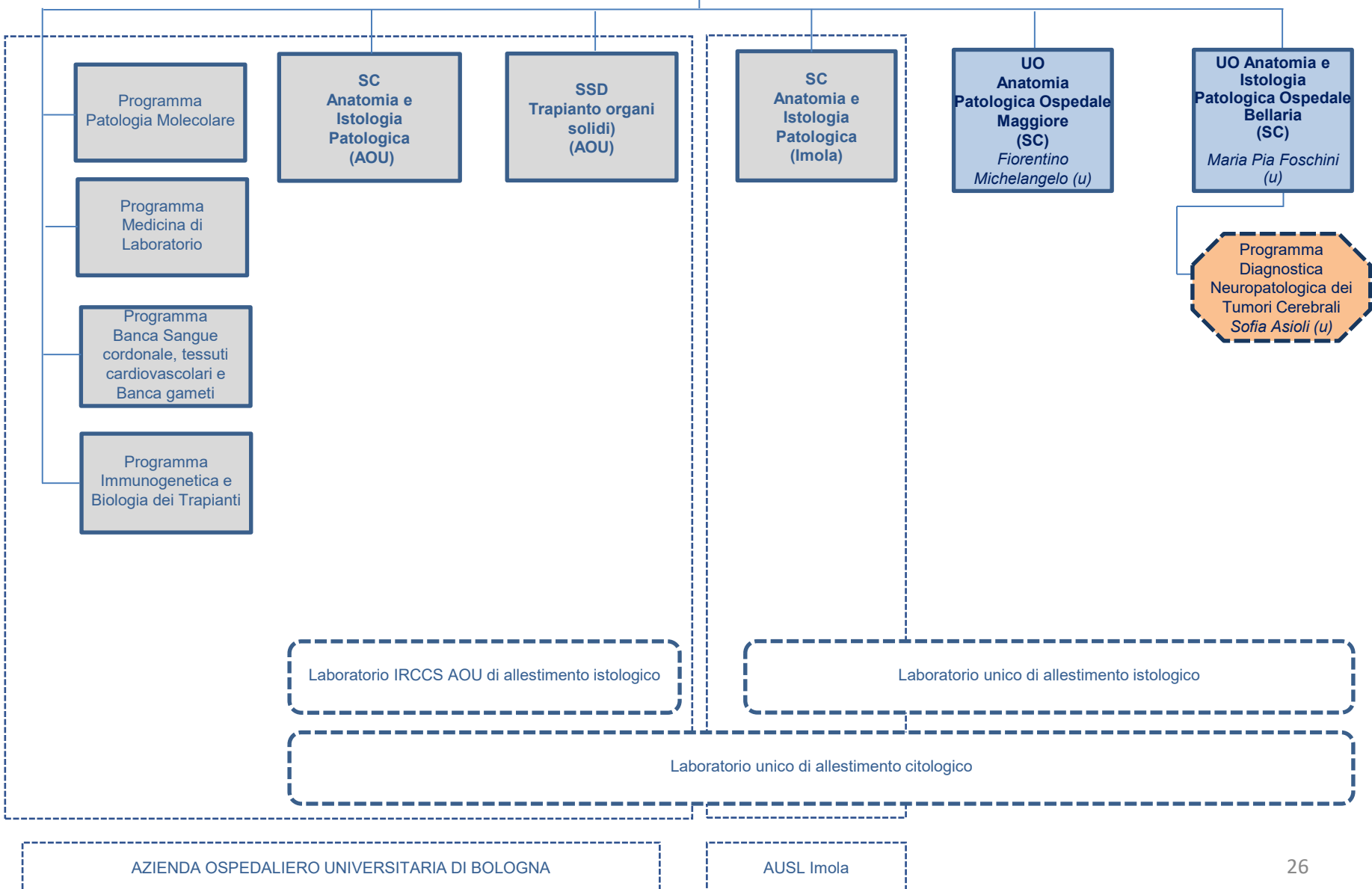
Alessio Bertini

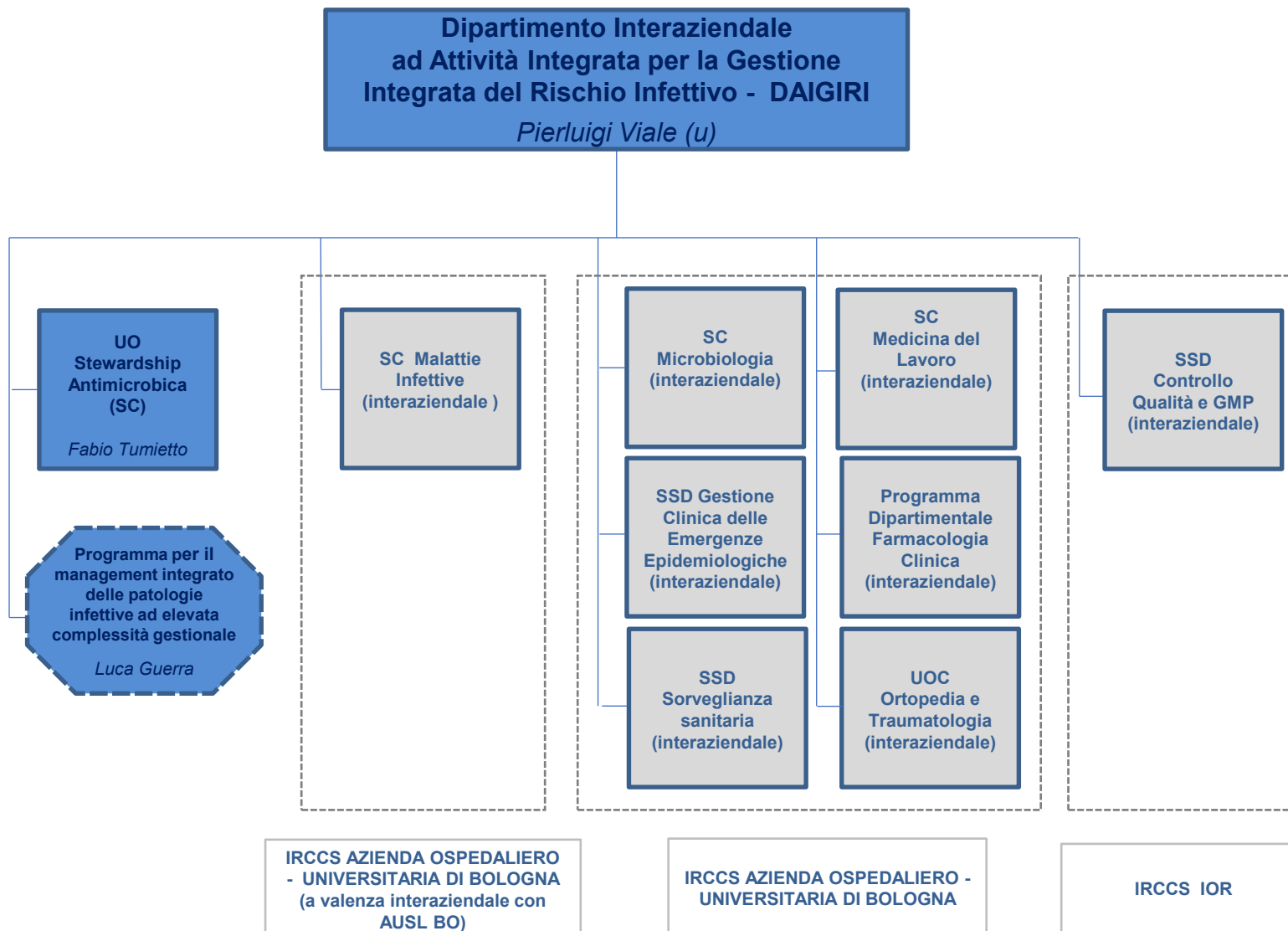


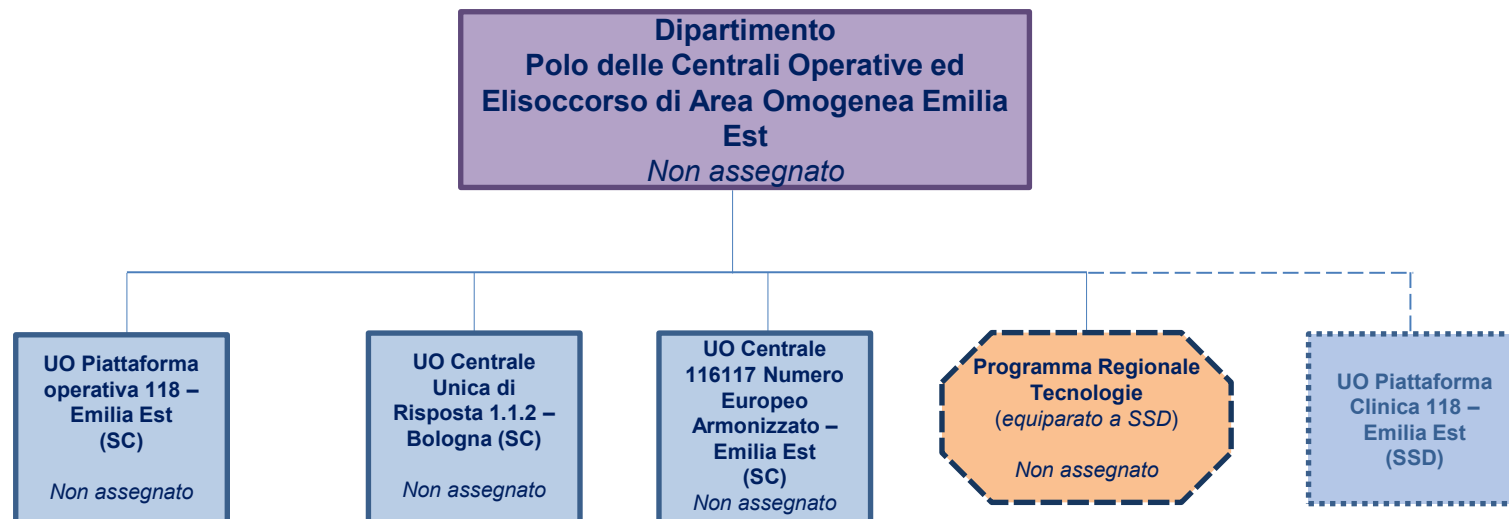
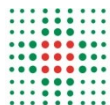


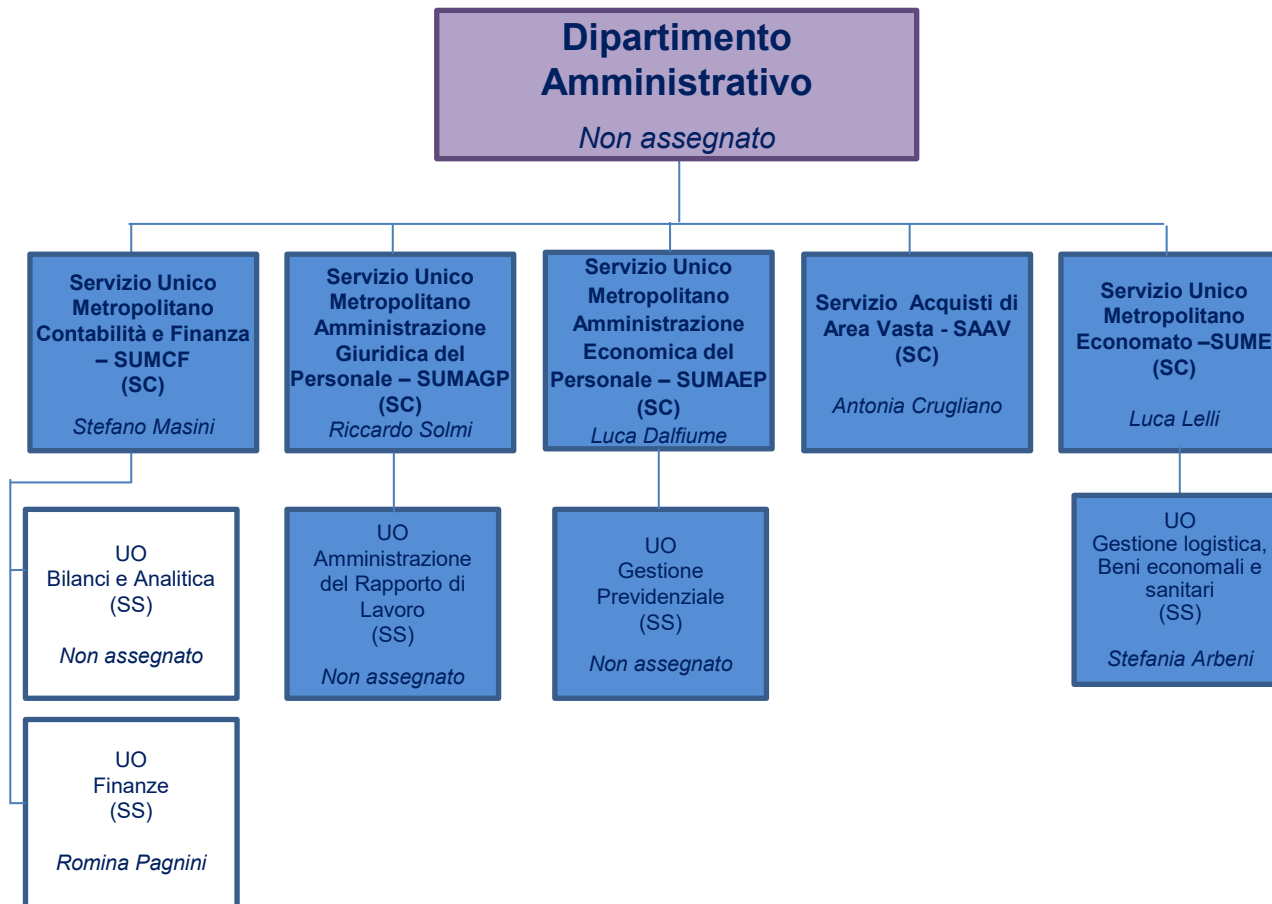
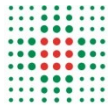
**Dipartimento interaziendale  
ad attività integrata di Anatomia Patologica -  
DIAP**

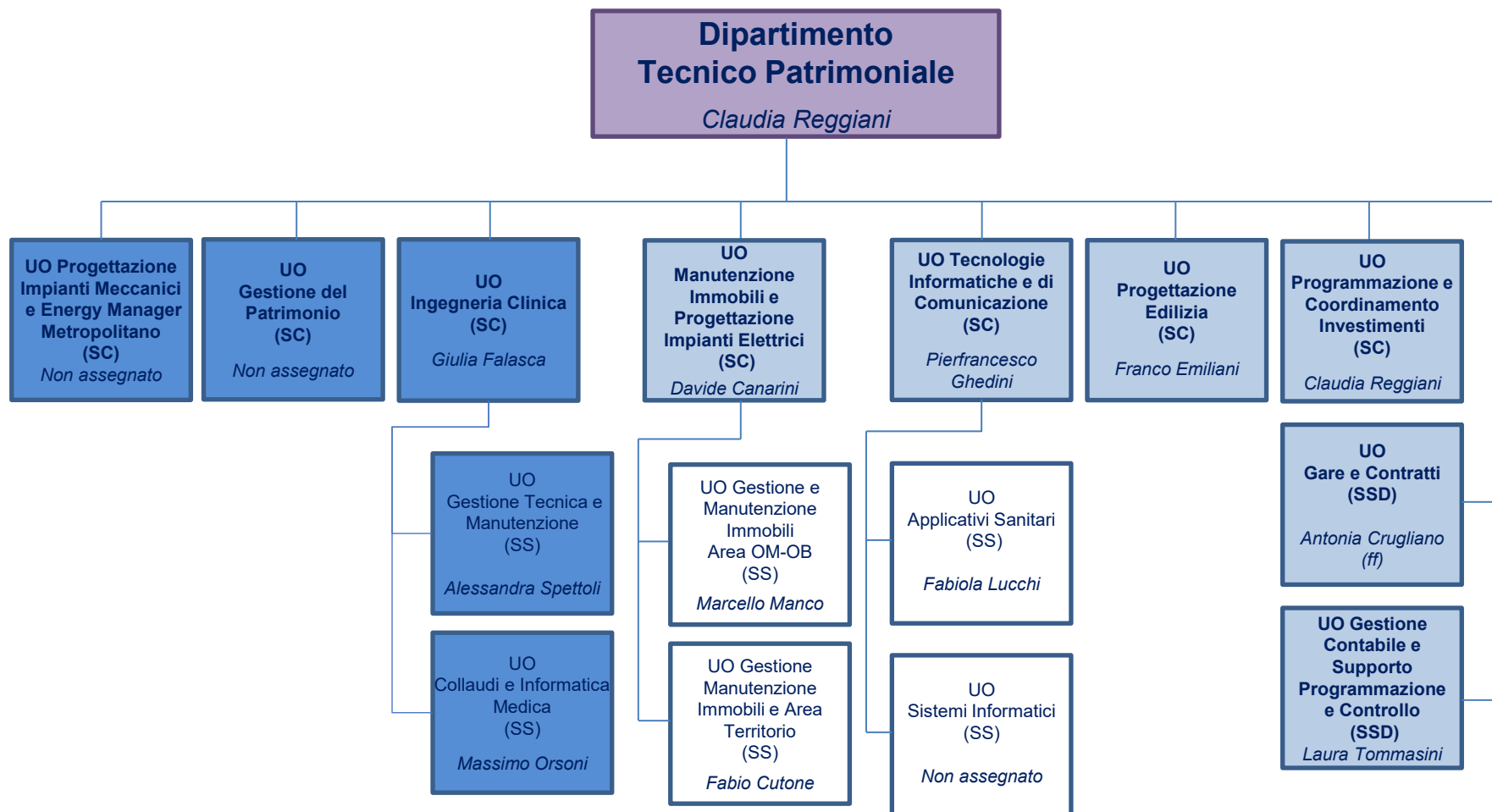
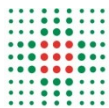
*Antonietta D'Errico (u)*

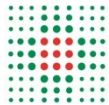


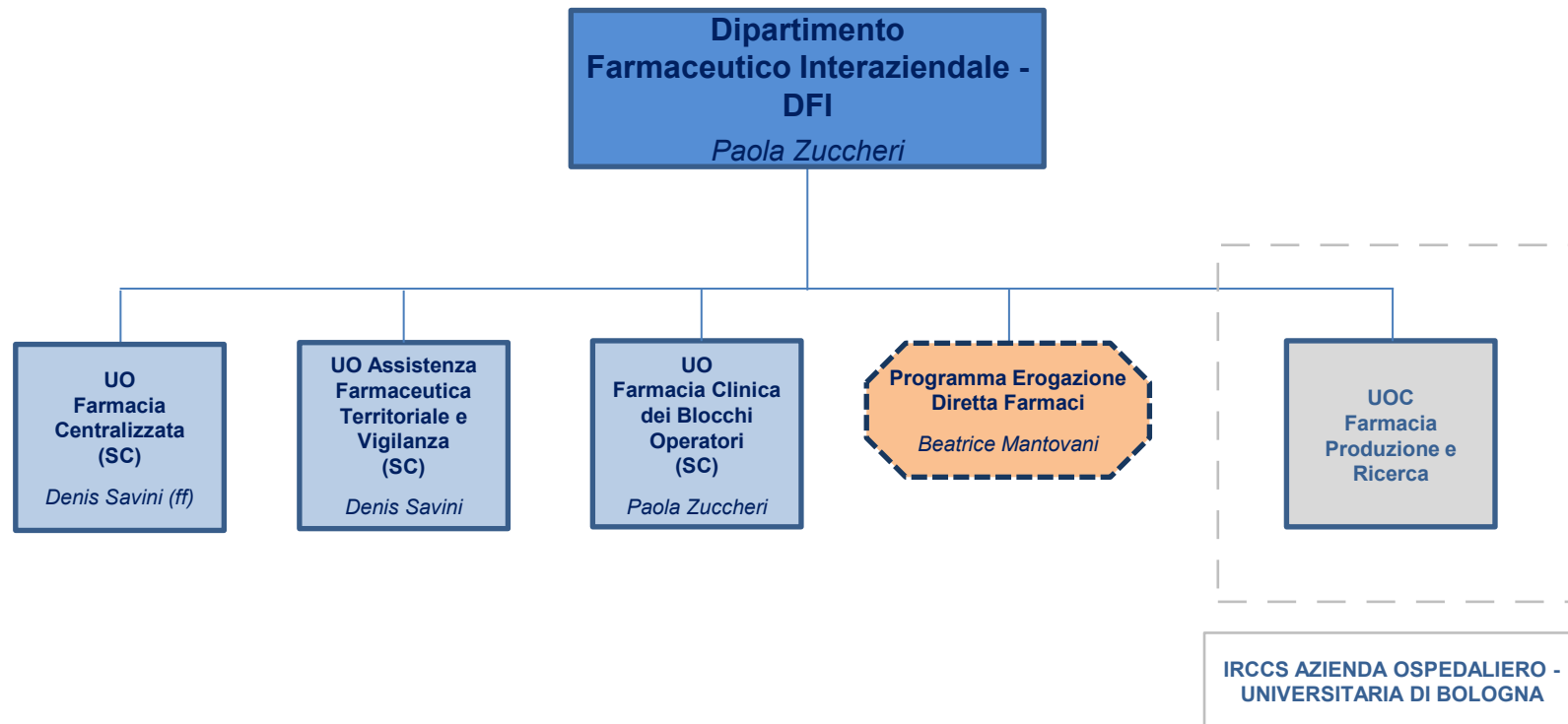
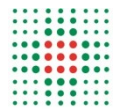














**DATeR**  
**Dipartimento Assistenziale, Tecnico e Riabilitativo**  
*Cristiano Pelati*

